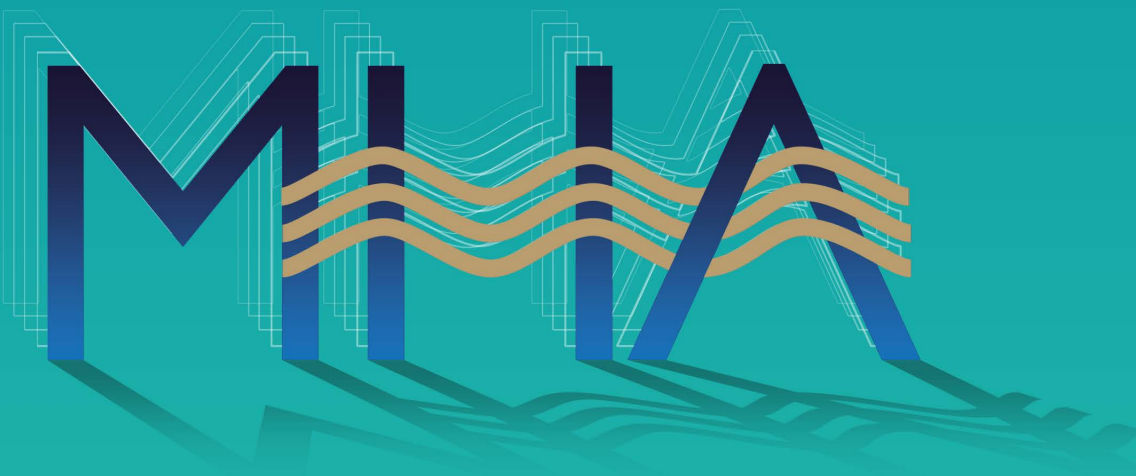


40th

Anniversary

Conference and Trade Show

March 27 thru 29, 2025



MARINE HOTEL ASSOCIATION
by and for the industry

AGENDA

Thursday, Mar 27

- | | |
|-------------------|---|
| 9am-5pm | Registration – Royal Palm Foyer |
| 10am-5pm | Exhibitor Set-Up
Royal Palm and Orchid Ballrooms |
| 7pm-9:30pm | Opening Event- Mangrove Pool |

Friday, Mar 28

- | | |
|------------------|---|
| 8am-5pm | Registration – Royal Palm Foyer |
| 8am-10am | MHA TRIBUTE BREAKFAST
WITH THE CHEFS
Vista Ballroom |
| 10am-4pm | Trade Show Open
Royal Palm and Orchid Ballroom |
| 7pm -10pm | Evening event –"Yacht Rock"
Rocking to the 80's
Vista Ballroom |

Saturday, Mar 29

- | | |
|--------------------|--|
| 8am-12pm | Registration – Royal Palm
Foyer |
| 8am-10am | Conference Breakfast
Vista Ballroom |
| 10am-2:30pm | Trade Show Open
Royal Palm and Orchid Ballrooms |
| 7pm-9:30pm | Grand Finale
Join us at the beach! |

Suggested Attire: Professionally informal during business hours.

HIGHLIGHTS

Thursday, Evening, March 27

Opening Reception

Sponsored by Heineken Brouwerijen.

Our traditional opening reception at the Mangrove Pool will be a fitting kick off for our 40th Anniversary program – be sure not to miss the finale we have planned!

Friday, Morning, March 28

MHA Tribute Breakfast

Sponsored by True Grade LLC.

We're breaking with tradition this morning and hosting a Tribute Breakfast for our members. Stations will be created by our distinguished group of chefs from the MHA Culinary Council. Also featured this morning will be a commemorative video history of MHA hosted by MHA board president, Philippe Faucher.

Trade Show Hours 10A-4P

We have three areas with booths this year— Registration foyer, Royal Palm and Orchid Ballrooms. There is convenient access between the two ballrooms as well as access from the foyer area. Please refer to the floor plan and exhibitor listing for specific locations.

Friday Evening – 7-10PM

Yacht Rock!

We're rocking back to the 80's in honor of MHA's original charter in 1985. Feel free to be creative and get in the spirit of the theme by creating (or digging up!) some fun attire for the evening!

Live Auction!

Be sure not to miss tonight's Live Auction activity, featuring cruises, luxury getaways and sporting events.

Saturday Morning March 29

Conference Breakfast – 8-10AM

Sponsored by Sump Stammer International Food Supply

Discussion with MHA Board Members
(Cruise Line and Supplier Partner Directors) : 45 Minutes

CONFERENCE

Q&A with the MHA Board

on growing successful Supplier/Cruise line partnerships

Moderators: John Mc Girl – MHA Board Secretary &
Bruce Tschampel MHA Chairperson

3 Main Questions/Themes:

- **Industry Trends** – what's new in 2025 that our MHA Community should be aware of?
 - o Changes in Regs for Cruise Line Supply Chain
 - o Specific Supply Challenges that we can partner on
 - o New Products/Areas of Focus
 - o Innovations and new product features that will drive different needs

For our new Members (and refresher for tenured) what are your top tips for successfully partnerships

- o **Cruise Line Perspective** – what they look for in a great supplier relationship
- o **Supplier Perspective** – what they need to support – be successful

How does MHA support the Industry what do we need from active membership?

- o As an MHA Board Member how would you describe the value MHA adds
- o How can members optimize their membership – what does an active membership look like

Followed by open Q&A

Saturday Evening: Join us for a barbecue at the beach and a fun finale for the close of our 40th anniversary event.

Casual attire and appropriate footwear.

From all of us at MHA, we wish you a most successful and enjoyable convention.

SPONSORS

MHA 40TH ANNIVERSARY CONFERENCE & TRADE SHOW

SPONSORING MEMBER COMPANIES

**OPENING RECEPTION
HEINEKEN BROUWERIJEN**

**MHA TRIBUTE BREAKFAST
TRUE GRADE LLC**

**CONFERENCE BREAKFAST
SUMP STAMMER INTERNATIONAL FOOD SUPPLY**

**PLATINUM SPONSOR
CARISAM-SAMUEL MEISEL
MICHAEL J. DEVINE ASSOCIATES
MIDDLE EAST FUJI GROUP**

**GOLD SPONSORS
PALM BAY INTERNATIONAL
THE CAWLEY COMPANY
LOST RETURNS**

**SILVER SPONSORS
AMI GROUP
MONDELEZ INTERNATIONAL
INTERNATIONAL WINE INITIATIVE**

**BRONZE SPONSOR
FRESHPOINT VANCOUVER**

**PRODUCT SPONSORSHIP
STARBOARD CRUISE SERVICES
TAYLOR MADE DESIGNS UK
THE APOLLO GROUP
THE CAWLEY COMPANY
NESTLE PROFESSIONAL SOLUTIONS**

Auction

MHA LIVE AUCTION

YACHT ROCK EVENT

FRIDAY, MARCH 28TH

The following companies have graciously donated cruises, luxury tours and items for the Live Auction:

NORWEGIAN CRUISE LINE

ROYAL CARIBBEAN CRUISES

WINDSTAR CRUISES

ADA COSMETICS INTL. & RIU PALACE MEXICO

AMI GROUP & HOTEL ROYAL - EVIAN, FRANCE

KING ESTATE WINERY & INTL. WINE INITIATIVE

STARBOARD CRUISE SERVICES

SOUTH ATLANTIC SHIP SUPPLY

EXHIBITORS

1880 HOSPITALITY/ONEIDA

1888 MILLS

ALFRED KARCHER SE & CO. KG

ALPHAONE USA

ALTIMETRE LLC

AMERICAN BEVERAGE MARKETERS

AMI DUTY FREE

ATLANTA CORP.

B&S BV

BAGELISTA

BAKELS

BANFI VINTNERS

BARRY CALLEBAUT USA

BLUE BELL CREAMERIES, LP

BLUE SEA PRODUCTS LLC

BRANDING IRON HOLDINGS -

HOLTEN MEATS

C & H INTERNATIONAL, A/S

CALDERON TEXTILES LLC

CARGILL GOURMET

CARLSBERG BREWERIES A/S

CHEF UNIFORMS

CHRISTOFLE USA

CHURCH & DWIGHT

CLEAN BRANDS LLC

COSTA NOVA

CRUISE INDUSTRY NEWS

CUISINE SOLUTIONS

DESIGN COLLECTIVE BY CINTAS

DISPENSER AMENITIES, INC.

DIVERSEY EUROPE OPERATIONS BV

DL SERVICES

DOWNLITE BEDDING INTERNATIONAL

DREAMILY DELICIOUS

EASTERN FISH COMPANY

ECOLAB, INC.

EDWARD DON & COMPANY

FERWERDA WORLDWIDE MEAT SUPPLIERS

FGF BRANDS INC.

FIORI BRUNA PASTA

FLORA FINE FOODS & ORVINO IMPORTS

FOH, INC.

FULL MOON FISH

GARNIER-THIEBAUT

GLOBAL MARITIME SUPPLY

GLOBAL RESOURCE REGISTRY LLC

GLOBAL RESOURCE REGISTRY LLC

GOURMET RESOURCE, INC.

GOURMET TABLE SKIRTS & LINENS

GROUPE GM -EXCLUSIVE AMENITIES

HALPERNS' PURVEYORS OF STEAK & SEAFOOD

HEINEKEN BROUWERIJEN BV

HIGHLAND FARMS

HINT

HOTEL EMPORIUM

HUILERIE DE LAPALISSE

IMPERIAL DADE

INTERNATIONAL WINE INITIATIVE

INTERVINE, INC.

JNS FOODS, LLC

JUCIFY

KASSATEX NEW YORK

KENT PRECISION FOODS

LAFORST SHOES, INC.

LE MUST

LE PALAIS DES THES

LE WAF - THE ARTISAN WAFFLE

LES VERGERS BOIRON

LIBBEY INC.

LIMSON TRADING COMPANY

MADE IN COOKWARE

MAPLE LEAF FARMS, INC.

MARGARITA MAN HQ, LLC

MARKY'S CAVIAR

MAVEKO

MEEDER GROUP

MICHAEL J. DEVINE & ASSOCIATES

MIDDLE EAST FUJI GROUP

MIKASA HOSPITALITY

MIKUNI MARKETING LTD.

MONDELEZ INTERNATIONAL

NACECARE SOLUTIONS

EXHIBITORS

NASSAU CANDY DISTRIBUTORS

NATURA WATER-BEUKENHORST COFFEE

NESTLE PROFESSIONAL SOLUTIONS

OCEAN'S FINEST- CAPITAL

OVERSEAS FOOD TRADING

PALM BAY INTERNATIONAL

PARADISO TOMATO PRODUCTS

PASTRYSTAR

POSEIDON SUPPLY COMPANYPOSEIDON SUPPLY COMPANY

PREGEL AMERICA

RAK PORCELAIN USA

RED BULL GMBH

REVOL USA

ROYAL SCHMIDT SEAFOOD ROTTERDAM

RUBBERMAID COMMERCIAL PRODUCTS

SAMUELS & SON SEAFOOD

SEARENITY SEAFOODS

SEB PROFESSIONAL - WMF & HEPP

SLAINTE WINES

SMARTFRUIT

SOBEL WESTEX

SOLA - THE NETHERLANDS

SOUTH FLORIDA PRODUCE

SOUTHERN BARCODE LLC

SRMAX SLIP RESISTANT SHOES

STANDARD TEXTILE CO.

STAR FISH & SEAFOOD LLC

STEELITE INTERNATIONAL

SWISH COCKTAILS

TAYLOR MADE DESIGNS (UK) LTD.

THE CAWLEY COMPANY

THEODOR R. RIST GMBH

THOMAS FOODS INTERNATIONAL USA

TOP WINES IMPORT

TORN RANCH

TOWER SUPPLIES

TRUE GRADE LLC

TWO RIVERS

UNILEVER FOOD SOLUTIONS

UPSTATE NIAGARA COOPERATIVE

VERTEX CHINA

VILLEROY & BOCH AG

WESSCO INTERNATIONAL

WESTROCK COFFEE

WORKWEAR OUTFITTERS